



Chioccarello

Viale dell'Industria 4, 36036 Torrelvicino (Vicenza) Italy

Tel. / Fax. + 39 0445 661651 +39 0445 1654761

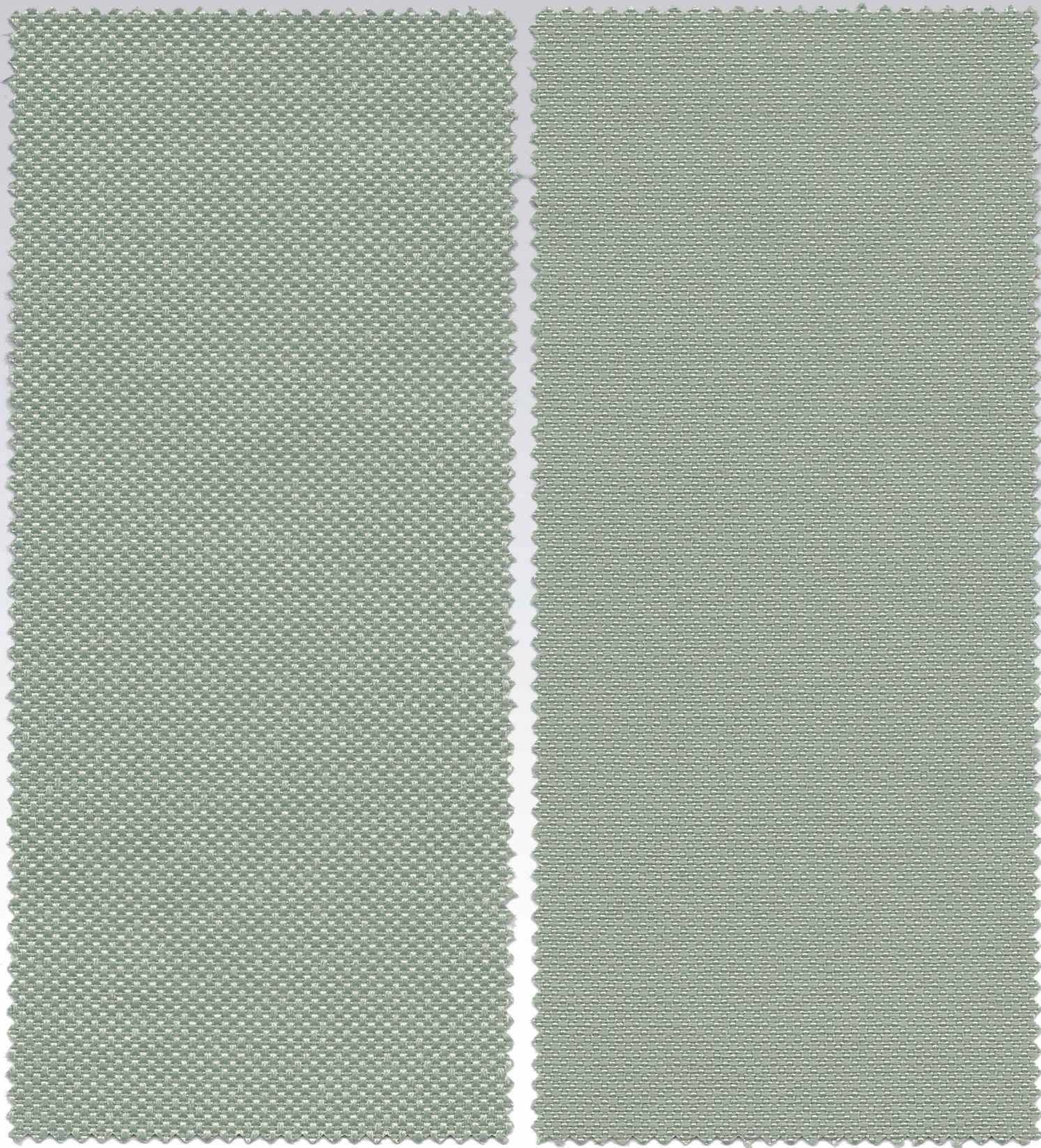
www.chioccarello.it - info@chioccarello.it

Pl. e C.F. 03845630247

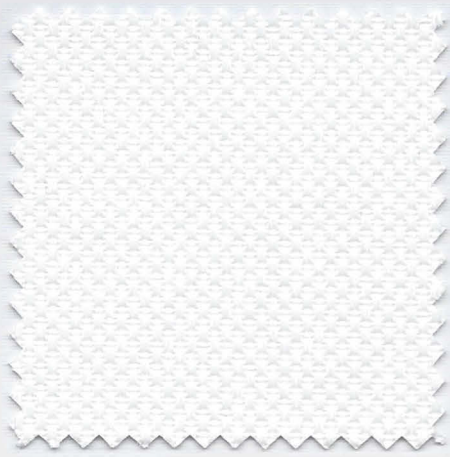
Sulò

MADE in ITALY

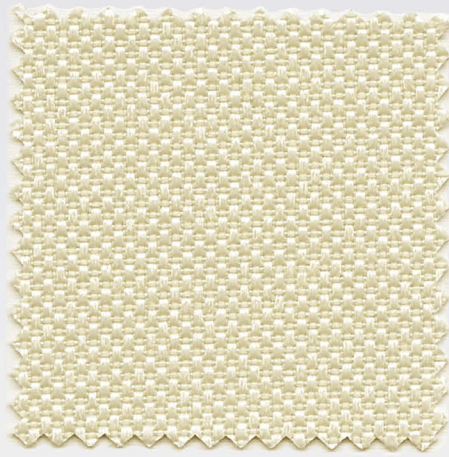




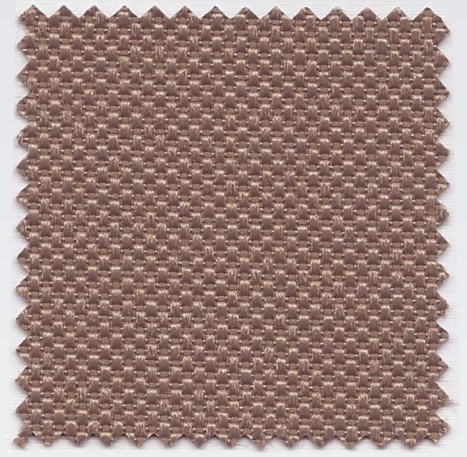
MADE in ITALY



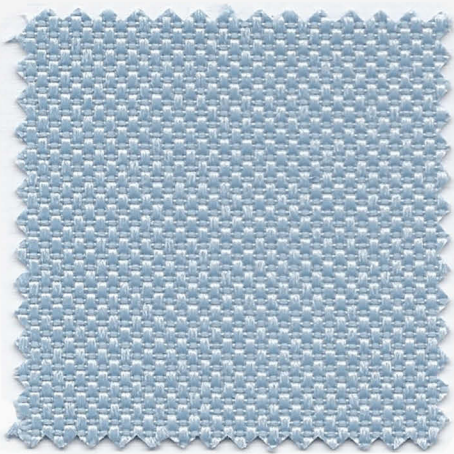
SLW 11



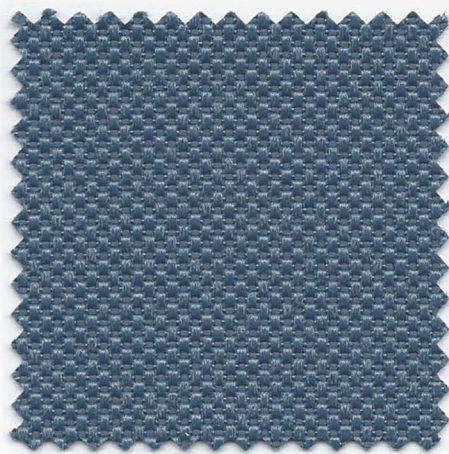
SLW 39



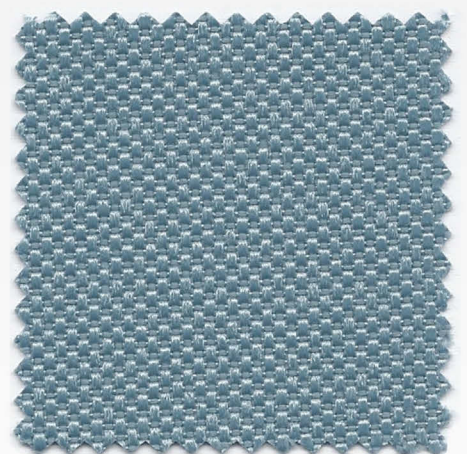
SLW 57



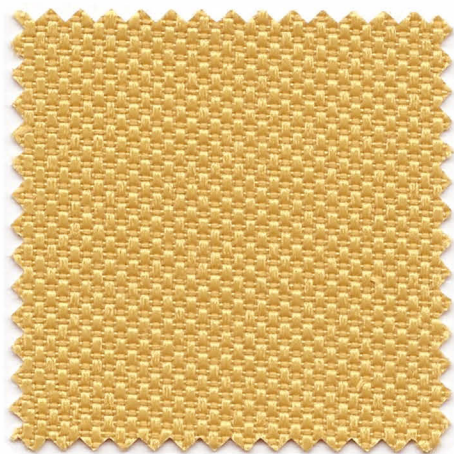
SLW 40



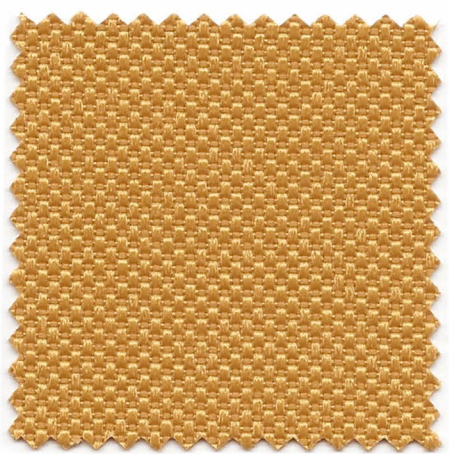
SLW 29



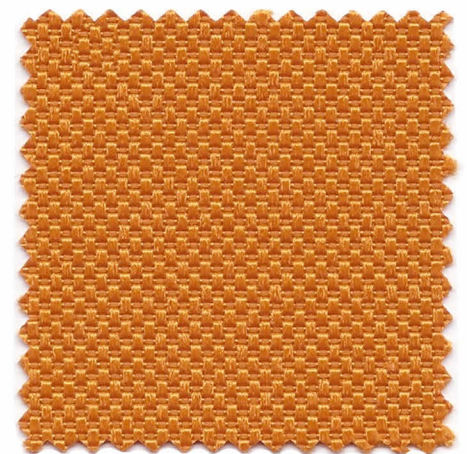
SLW 27



SLW 68

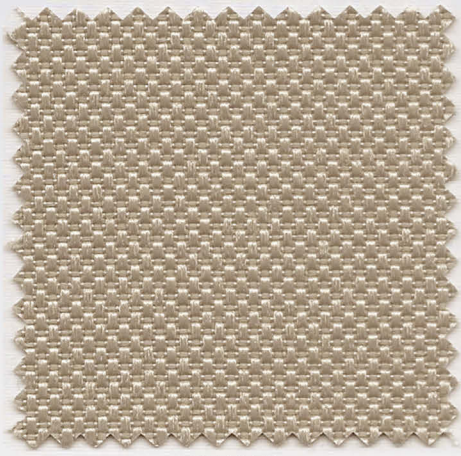


SLW 15

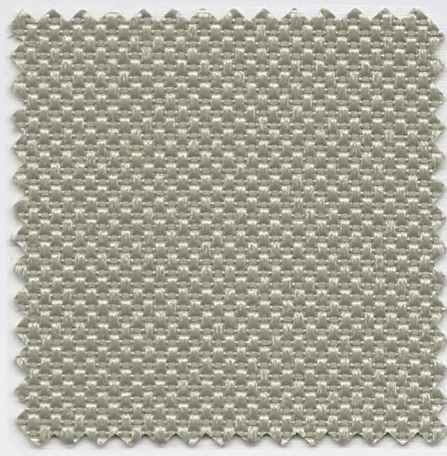


SLW 59

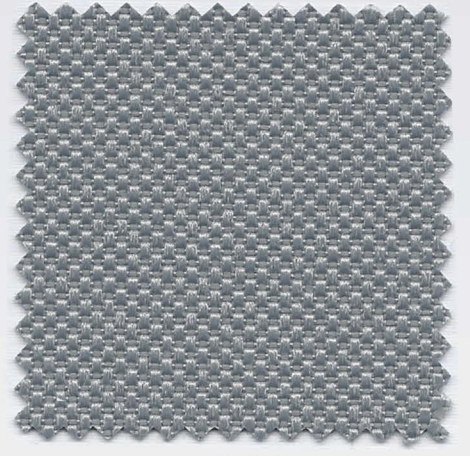
MADE in ITALY



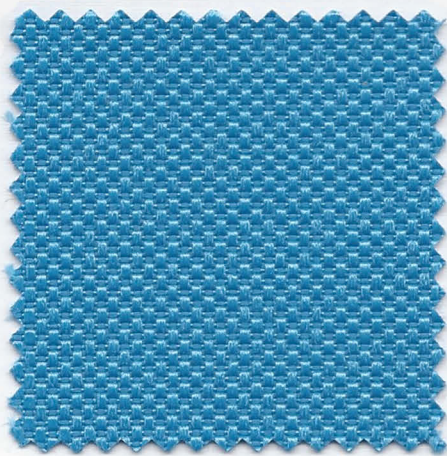
SLW 53



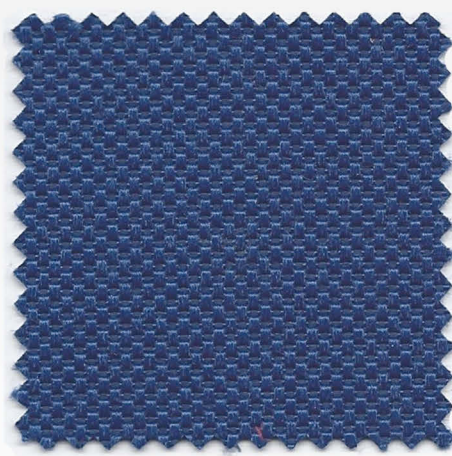
SLW 42



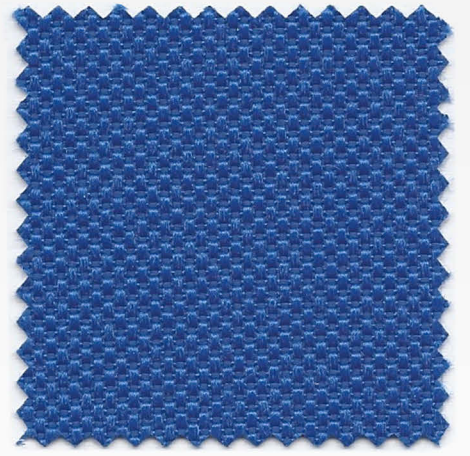
SLW 60



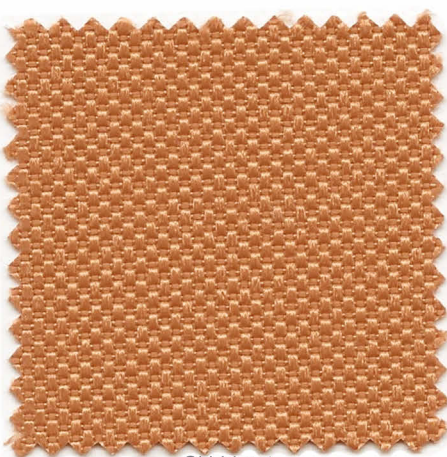
SLW 58



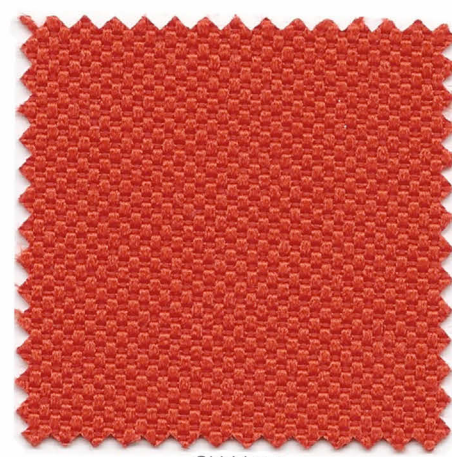
SLW 69



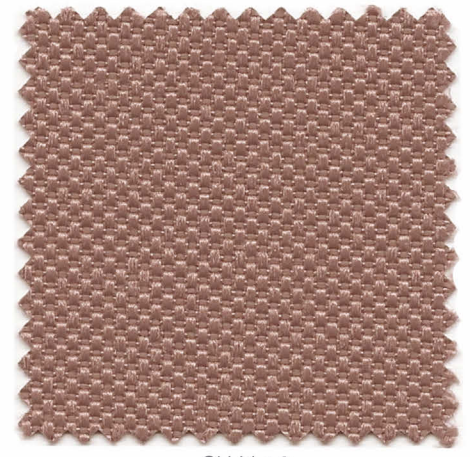
SLW 56



SLW 16

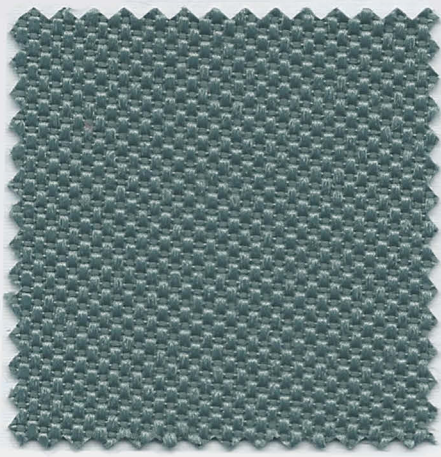


SLW 54

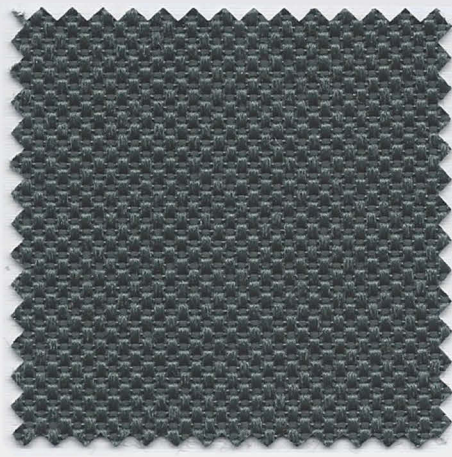


SLW 12

MADE in ITALY



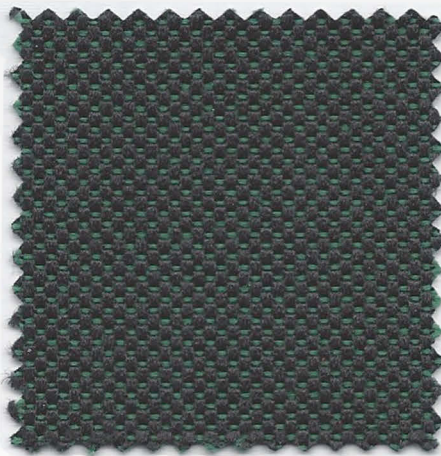
SLW 26



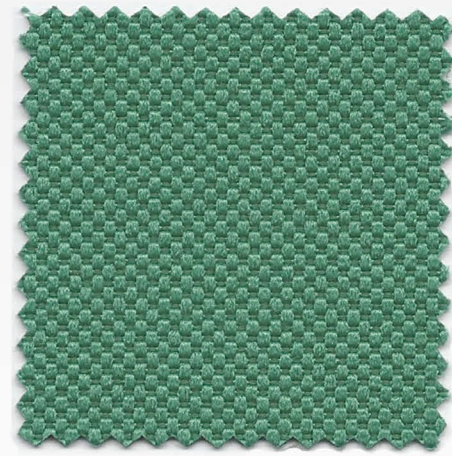
SLW 52



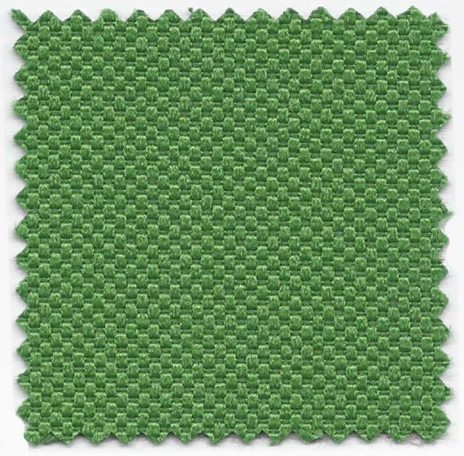
SLW 66



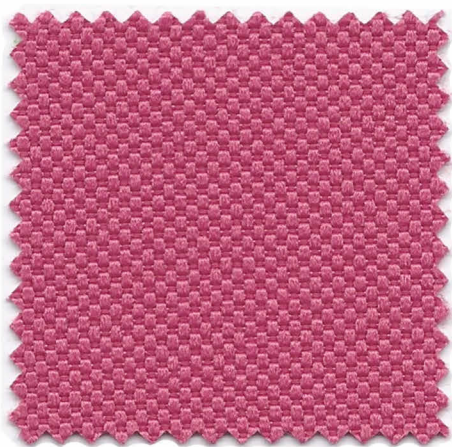
SLW 04



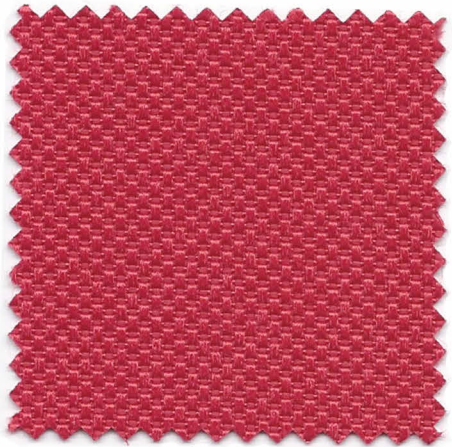
SLW 67



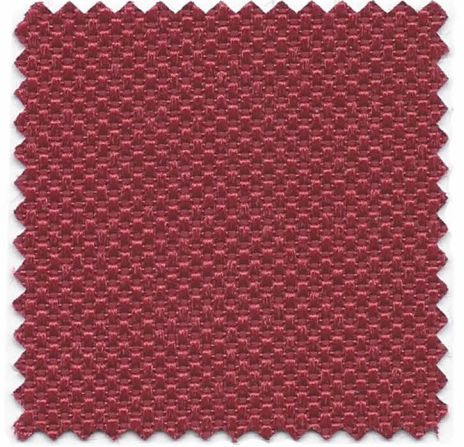
SLW 55



SLW 65

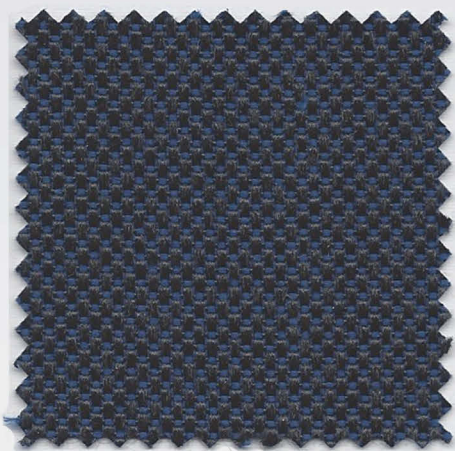


SLW 62



SLW 51

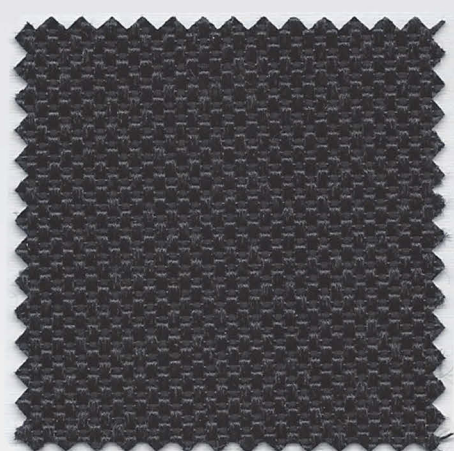
MADE in ITALY



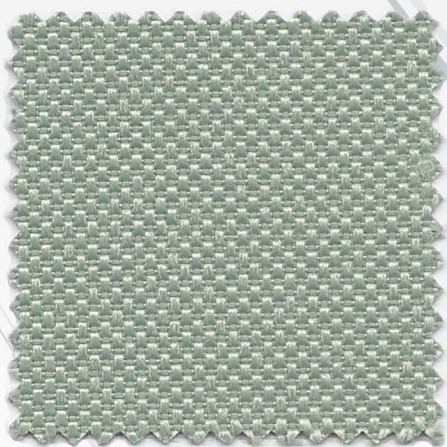
SLW 02



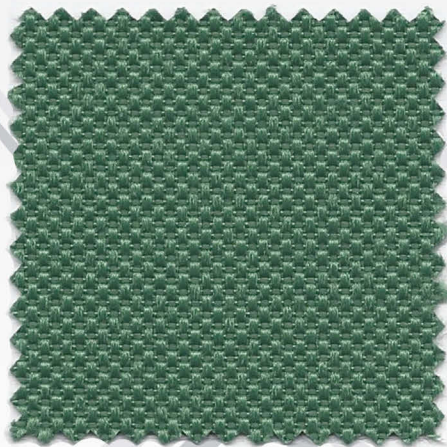
SLW 01



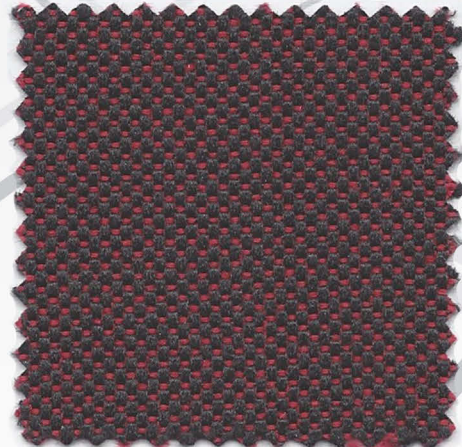
SLW 50



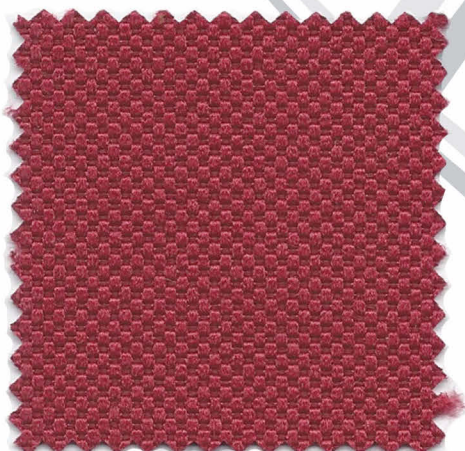
SLW 33



SLW 30



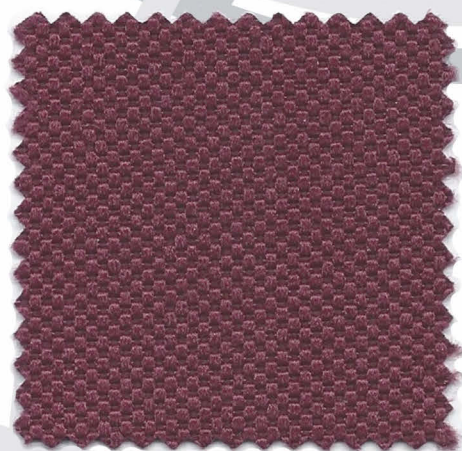
SLW 03



SLW 61



SLW 64



SLW 63

MADE in ITALY

ART. SALO'

I	UK	D	F	E
Composizione 100% Poliestere FR	Composition 100% Polyester FR	Zusammensetzung 100% Polyester FR	Materiale 100% Polyester FR	Composició 100% Poliéster FR
Peso 380 g/m ² ± 10%	Weight 380 g/m ² ± 10%	Gewicht 380 g/m ² ± 10%	Poids 380 g/m ² ± 10%	Peso 380 g/m ² ± 10%
Altezza 140 cm ± 2	Width 140 cm ± 2	Breite 140 cm ± 2	Längeur 140 cm ± 2	Ancho 140 cm ± 2
Lunghezza Rotolo 25 mt ±10%	Roll lenght 25 mt ±10%	Rolle länge 25 mt ±10%	Longuer rotulea 25 mt ±10%	Longitud rollo 25 mt ±10%
Resistenza all'abrasione >150000 cicli Martindale	Abrasion Resistance >150000 Martindale cycles	Scheuerfestigkeit >150000 Martindale Scheuertouren	Résistance à l'abrasion >150000 Martindale tours	Resistencia a la abrasión >150000 Martindale ciclos
Resistenza alla luce (EN ISO 105-B02) 5	Light Fastness (EN ISO 105-B02) 5	Lichtechtheit (EN ISO 105-B02) 5	Solidité à la lumière (EN ISO 105-B02) 5	Solidez a la luz (EN ISO 105-B02) 5
Resistenza allo sfregamento (EN ISO 105-X12) Umido: 5 Secco: 5	Fastness to Rubbing (EN ISO 105-X12) Wet: 5 Dry: 5	Reibechtheit (EN ISO 105-X12) Nass: 5 Trocken: 5	Solidité au frottement (EN ISO 105-X12) Mouillé: 5 Sec: 5	Solidez al rozamiento (EN ISO 105-X12) Húmedo: 5 Seco: 5
Infiammabilità 1 IM UNI 9175 EN 1021-1:2006 EN 1021-2:2006 CRIB 5 TB 117:2013 IMO M1 B1	Flammability 1 IM UNI 9175 EN 1021-1:2006 EN 1021-2:2006 CRIB 5 TB 117:2013 IMO M1 B1	Feuersicherung 1 IM UNI 9175 EN 1021-1:2006 EN 1021-2:2006 CRIB 5 TB 117:2013 IMO M1 B1	Flammabilité 1 IM UNI 9175 EN 1021-1:2006 EN 1021-2:2006 CRIB 5 TB 117:2013 IMO M1 B1	Inflamabilidad 1 IM UNI 9175 EN 1021-1:2006 EN 1021-2:2006 CRIB 5 TB 117:2013 IMO M1 B1
Assorbimento acustico: UNI EN ISO 354:2003	Acoustic Absorption: UNI EN ISO 354:2003	Schallabsorptions: UNI EN ISO 354:2003	absorption acoustique: UNI EN ISO 354:2003	absorción acústica: UNI EN ISO 354:2003
Colore Leggere differenze di colore fra una partita e l'altra sono da considerarsi normali	Colour Slight color differences between one lot and another have to be considered within commercial tolerance	Farbabweichungen Leichte farbunterschiede sind zwischen zwei Partien als normal su betrachten	Coloris Légères différences de couleur entre un lot et l'autre doivent être considérés comme étant normales	Color ligeras diferencias de color entre un lote y el otro son normales



Stock Service



Cut Service



MADE in ITALY