

**THIRTY-SIX**

		490 ..	491 ..	492 ..
Material composition	ISO 2076	100% Polyester		
Fabric width	EN 1773	≈ 140cm		
Weight	EN 12127	≈ 275 g/m <sup>2</sup>	≈ 285 g/m <sup>2</sup>	≈ 275 g/m <sup>2</sup>
Piece length		≈ 60 m		
Light fastness	ISO 105-B02	Note 7 <sup>[of 8]</sup>		
Weather fastness	ISO 105-B04	Note 7 <sup>[of 8]</sup>		
max. Tensile strength	EN ISO 13934-1	≈ 2400 N <sup>1</sup>   ≈ 1100 N <sup>2</sup>		
Elongation	EN ISO 13934-1	≈ 35 % <sup>1</sup>   ≈ 30 % <sup>2</sup>	≈ 35 % <sup>1</sup>   ≈ 25 % <sup>2</sup>	
Colour fastness to rubbing	ISO 105/X12	Note 4 <sup>3</sup> <sup>[of 5]</sup>   Note 4 <sup>4</sup> <sup>[of 5]</sup>		
Fastness to sea water	ISO 105-E02	Note 4 <sup>[of 5]</sup>		
Chlorine resistance	ISO 105-E03	Note 4-5 <sup>[of 5]</sup>		
Water repellency	EN ISO 4920	Note 4 <sup>[of 5]</sup>		
Oil repellency	DIN En ISO 14419	Note 4 <sup>[of 8]</sup>		
Abraison resistance	EN ISO 12947-2	≈ 35000 rubs	≈ 50000 rubs	
Pilling resistance	EN ISO 12945-2	≈ Note 4-5 <sup>[of 5]</sup>	≈ Note 4 <sup>[of 5]</sup>	

1 warp 2 weft 3 dry 4 wet

**USP**



UV-resistant and non-light sensitiv



Dirt and water repellent



Mould resistant



Very high abrasion resistance



Low maintenance



Tear-proof

**THIRTY-SIX**



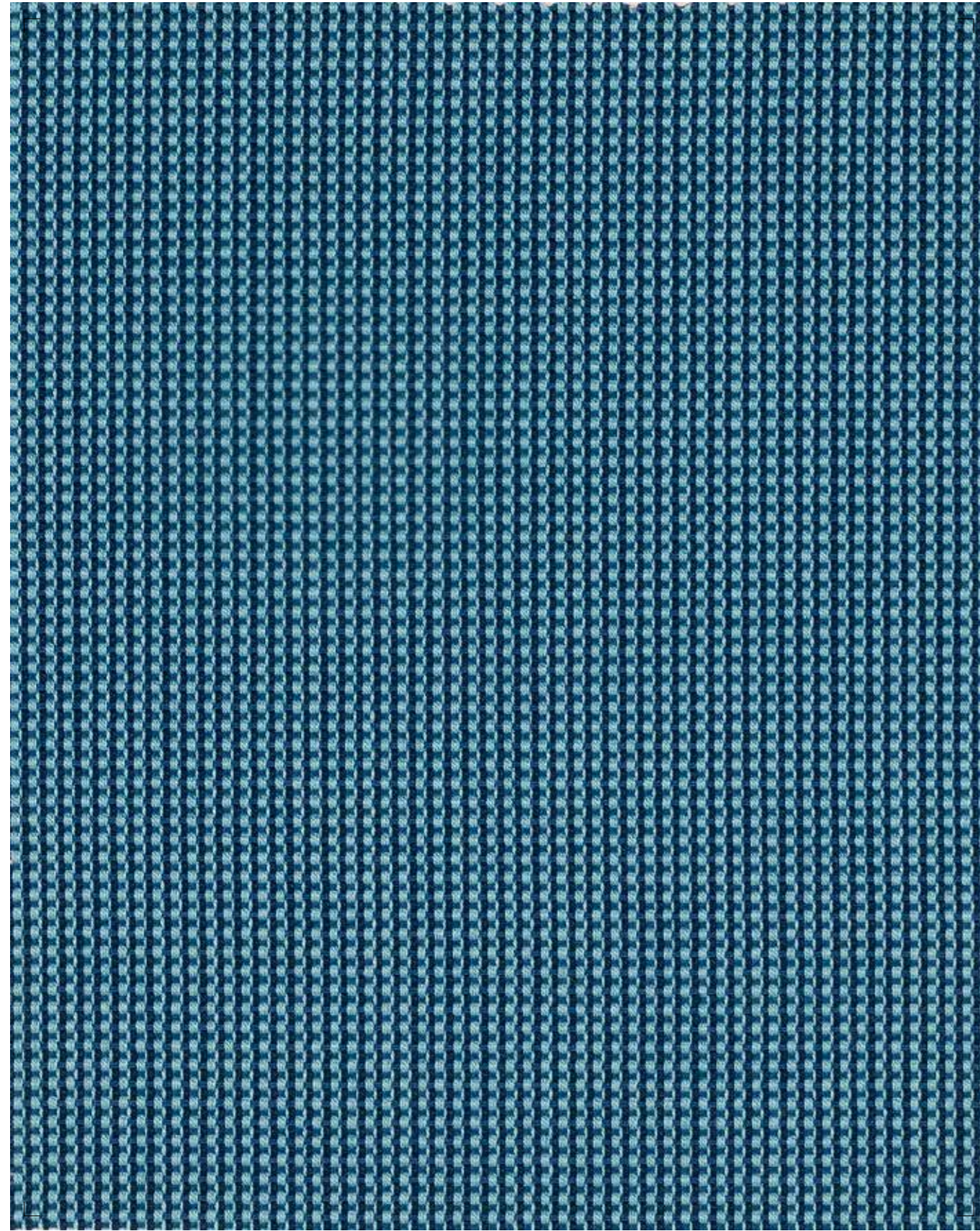
# THIRTY-SIX

## THIRTY-SIX

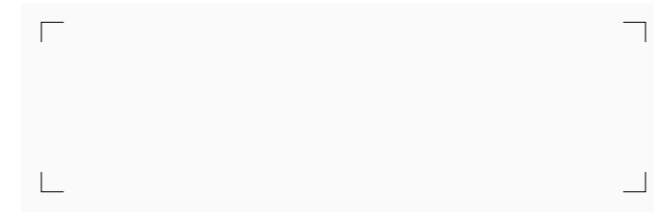
36 colours to choose from, made up of 36 threads per cm in the warp. The fabric's high warp density stands for premium quality and durability, and is 'made in Germany'. Choose your favourite colour for your furniture item. Whether inside or outside: the stunning fabric colours in the thirty-six collection will blow you away. UV-resistant, water-repellent and resistant to stains. Expertise and experience in textiles 'made by swela'.

**EXAMPLE APPLICATIONS**





491 05 AQUA BLUE



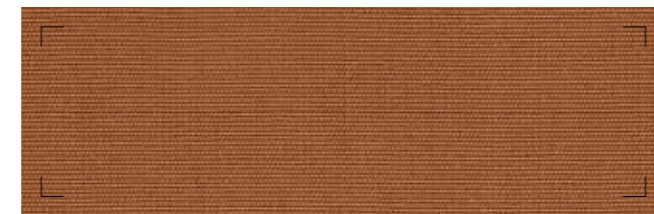
492 61 SOFT WHITE



492 47 IVORY BEIGE



492 07 GOLDEN HONEY



492 67 COPPER BROWN



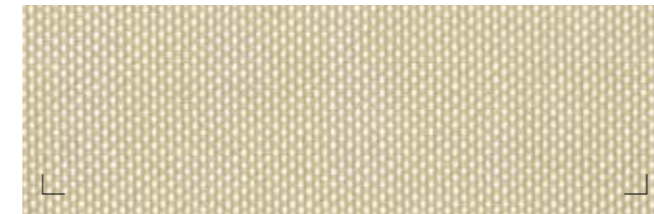
492 03 CORAL RED



492 57 WINE RED



490 09 CREAM



491 17 NATURAL LINEN



490 01 TOFFEE



492 12 SALMON



492 03 CHERRY RED



490 02 DARK WALNUT



492 02 LIGHT CURCUMA



491 01 LIME GREEN



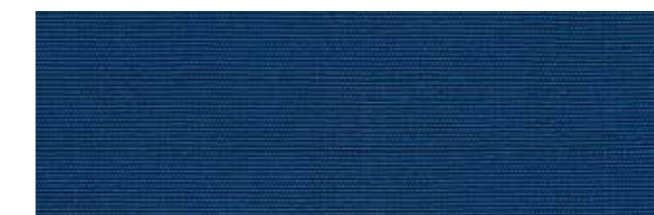
492 56 OLIVE GREEN



490 07 IRISH COFFEE



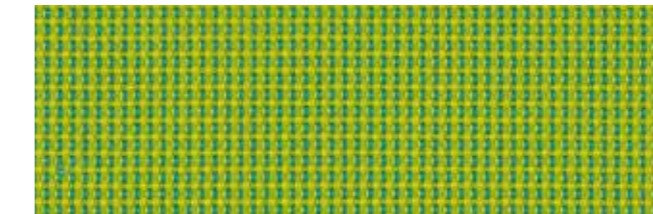
491 16 LAGOON



492 05 CLASSIC BLUE



492 01 SUNFLOWER



491 06 SPRING GREEN



492 06 FOREST GREEN



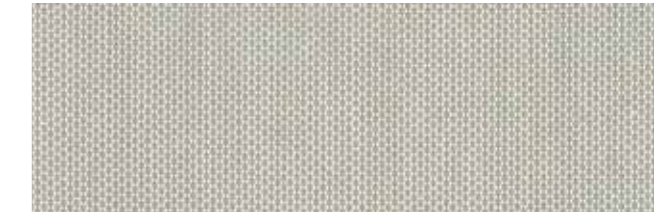
490 04 PEBBLE STONE



491 05 AQUA BLUE



491 15 ROYAL BLUE



490 06 PEARL GREY



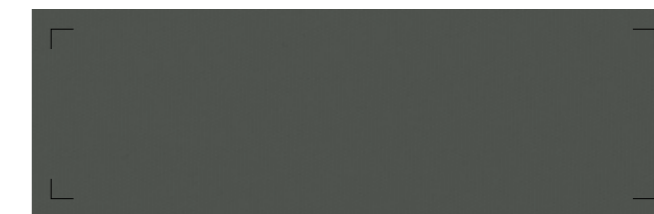
492 55 DENIM GREY



490 05 SLATE BLUE



491 07 CLOUDY GREY



492 78 SMOKE GREY



490 08 CHARCOAL



492 25 SMOKY BLUE



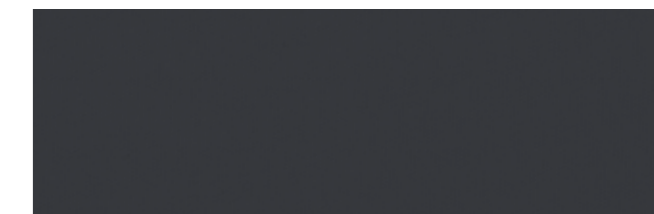
491 08 DUSTY BLUE



492 95 DEEP NAVY



490 18 RHINO GREY



490 28 CARBON GREY



492 49 SHADOW BLACK

## LOFT



# LOFT

## LOFT

The Loft design captivates with its velvety surface. The luxurious chenille thread creates a feeling of well-being. Pure comfort. The Teflon coating makes Loft perfect for indoor and outdoor areas alike. 10 colours in homely shades are available.

## EXAMPLE APPLICATIONS



seat covers



seat cushion



beanbags

## TECHNICAL DETAILS

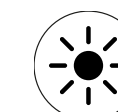
Made in Germany

## LOFT

		493 ..
Material composition	ISO 2076	100 % Polyester
Fabric width	EN 1773	≈ 140cm
Weight	EN 12127	≈ 360 g/m <sup>2</sup>
Piece length		≈ 50 m
Light fastness	ISO 105-B02	Note 6 - 7 <sup>[of 8]</sup>
Weather fastness	ISO 105-B04	Note 6 - 7 <sup>[of 8]</sup>
max. Tensile strength	EN ISO 13934-1	≈ 2400 N <sup>1</sup>   ≈ 700 N <sup>2</sup>
Elongation	EN ISO 13934-1	≈ 35 % <sup>1</sup>   ≈ 25 % <sup>2</sup>
Colour fastness to rubbing	ISO 105/X12	Note 4 <sup>3</sup> <sup>[of 5]</sup>   Note 4 <sup>4</sup> <sup>[of 5]</sup>
Fastness to sea water	ISO 105-E02	Note 4 <sup>[of 5]</sup>
Chlorine resistance	ISO 105-E03	Note 4 <sup>[of 5]</sup>
Water repellency	EN ISO 4920	Note 4 <sup>[of 5]</sup>
Oil repellency	DIN En ISO 14419	Note 4 <sup>[of 8]</sup>
Abraision resistance	EN ISO 12947-2	≈ 30000 rubs
Pilling resistance	EN ISO 12945-2	≈ Note 4-5 <sup>[of 5]</sup>

1 warp 2 weft 3 dry 4 wet

## USP



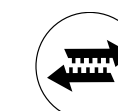
UV-resistant and non-light sensitiv



Dirt and water repellent



Mould resistant



High abrasion resistance



Low maintenance

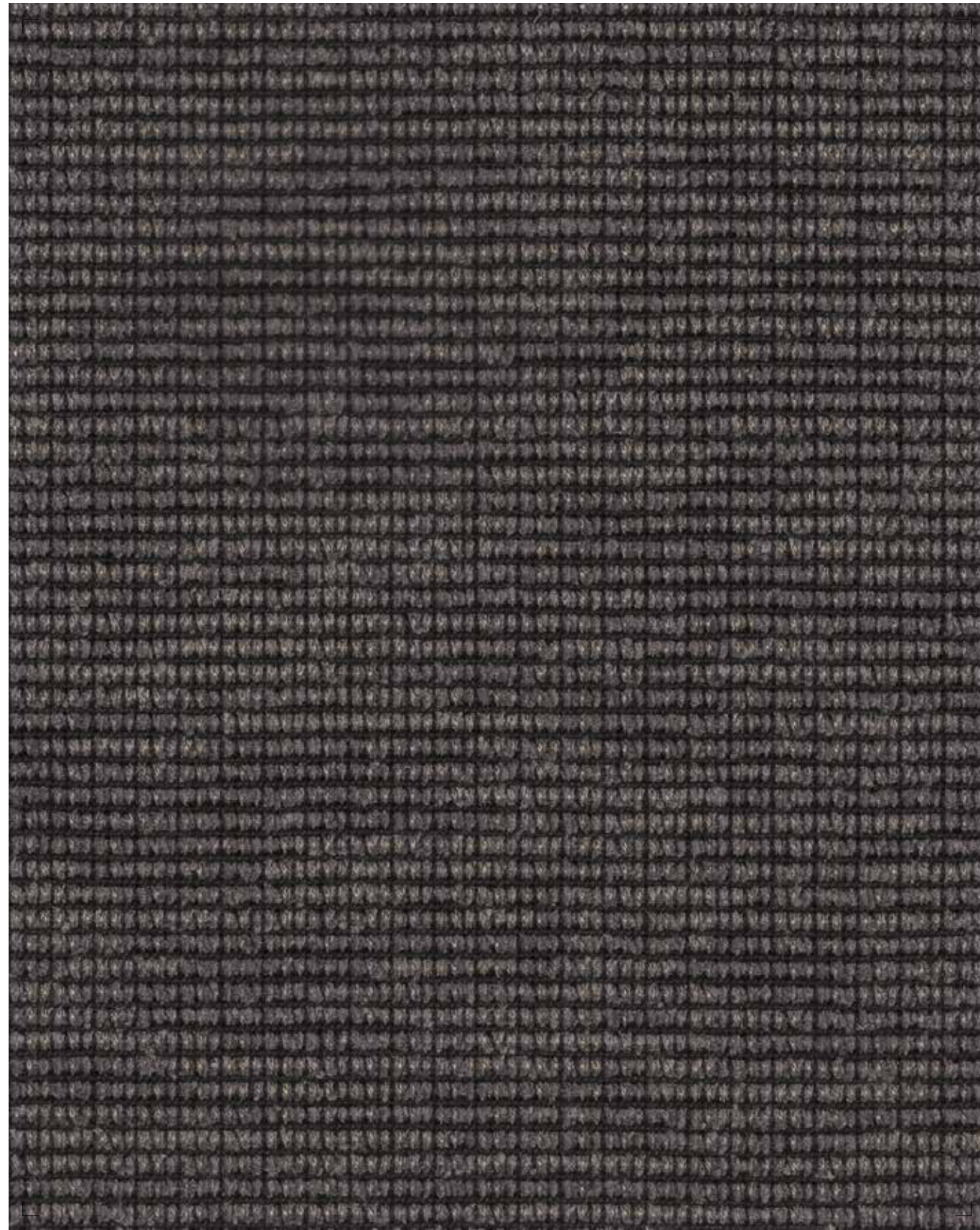


Tear-proof

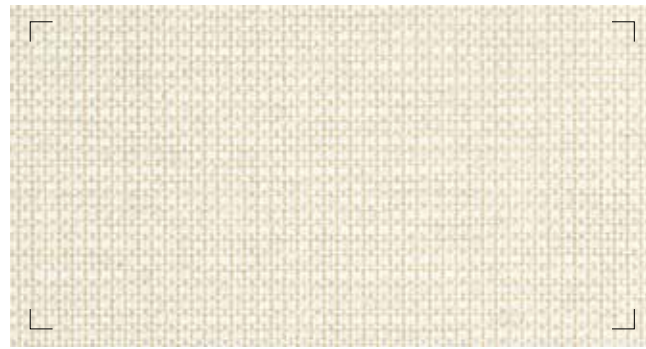


REACH-konform





493 08 STORM GREY



493 19 WHITE IVORY



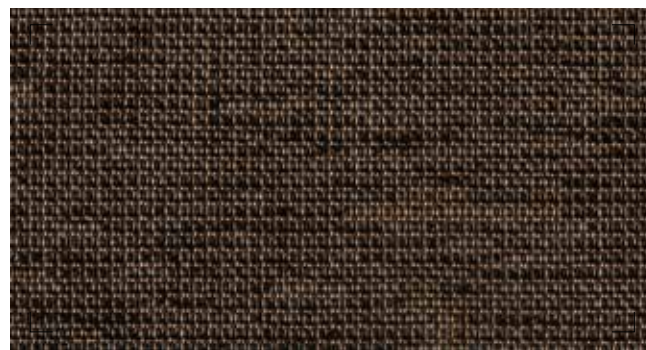
493 12 WARM BEIGE



493 17 POWDER BROWN



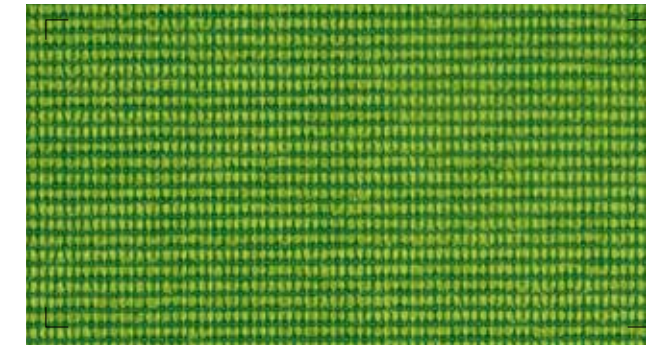
493 08 STORM GREY



493 18 UMBER BROWN



493 03 CADMIUM RED



493 06 PALM GREEN



493 15 DARK INDIGO



493 05 YALE BLUE



493 28 SOFT STONE

## TWIST



## TECHNICAL DETAILS

Made in Germany

### TWIST

		495 ..
Material composition	ISO 2076	100% Polyester
Fabric width	EN 1773	≈ 180 cm
Weight	EN 12127	≈ 350 g/m <sup>2</sup>
Piece length		≈ 40 m
Light fastness	ISO 105-B02	Note 7 <sup>[of 8]</sup>
Weather fastness	ISO 105-B04	Note 7 <sup>[of 8]</sup>
max. Tensile strength	EN ISO 13934-1	≈ 3200 N <sup>1</sup>   ≈ 3200 N <sup>2</sup>
Elongation	EN ISO 13934-1	≈ 35 % <sup>1</sup>   ≈ 40 % <sup>2</sup>
Colour fastness to rubbing	ISO 105/X12	Note 4 <sup>3</sup> <sup>[of 5]</sup>   Note 4 <sup>4</sup> <sup>[of 5]</sup>
Fastness to sea water	ISO 105-E02	Note 4 <sup>[of 5]</sup>
Chlorine resistance	ISO 105-E03	Note 4-5 <sup>[of 5]</sup>
Water repellency	EN ISO 4920	Note 4 <sup>[of 5]</sup>
Oil repellency	DIN En ISO 14419	Note 4 <sup>[of 8]</sup>
Abraision resistance	EN ISO 12947-2	≈ 50000 rubs
Pilling resistance	EN ISO 12945-2	≈ Note 5 <sup>[of 5]</sup>

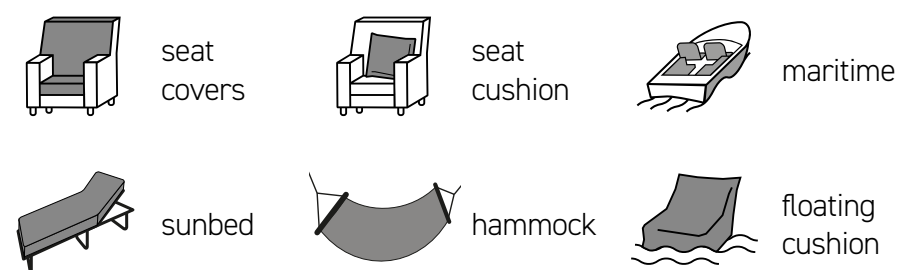
1 warp 2 weft 3 dry 4 wet

# TWIST

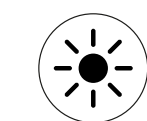
## TWIST

The Twist design unites colour with structure in perfect harmony. The structured surface and light sheen give this fabric its luxurious appearance – particularly refined thanks to its light translucence and pleasant feel.

### EXAMPLE APPLICATIONS



### USP



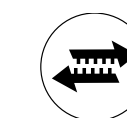
UV-resistant and non-light sensitiv



Dirt and water repellent



Mould resistant



Very high abrasion resistance



Low maintenance



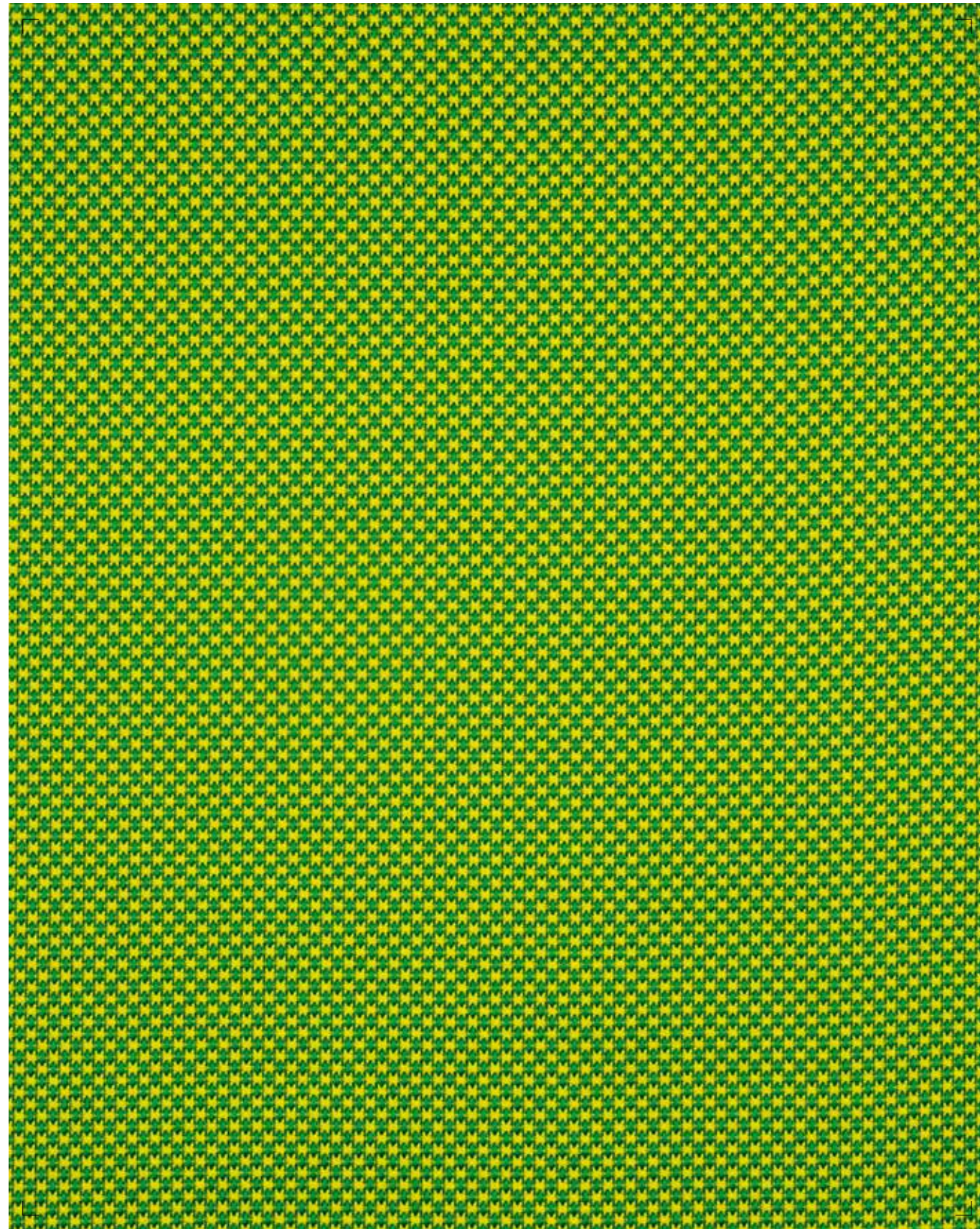
Tear-proof



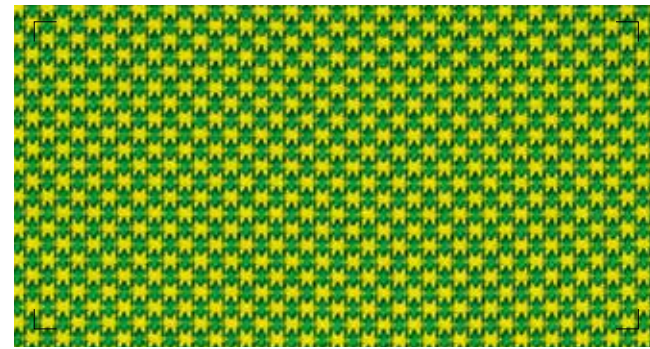
REACH-konform



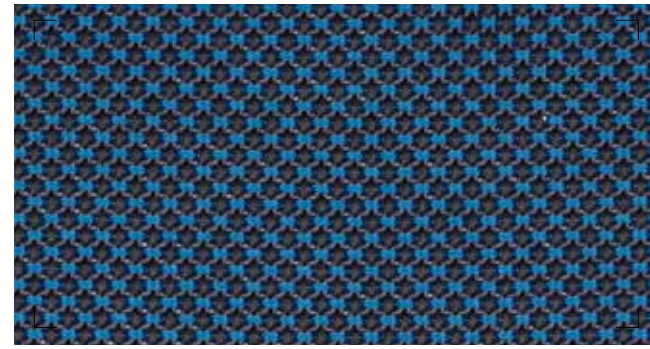
TWIST



495 16 GARDEN GREEN



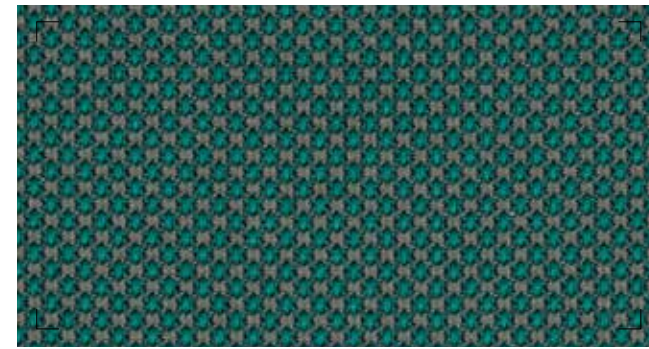
495 16 GARDEN GREEN



495 05 VENETIAN BLUE



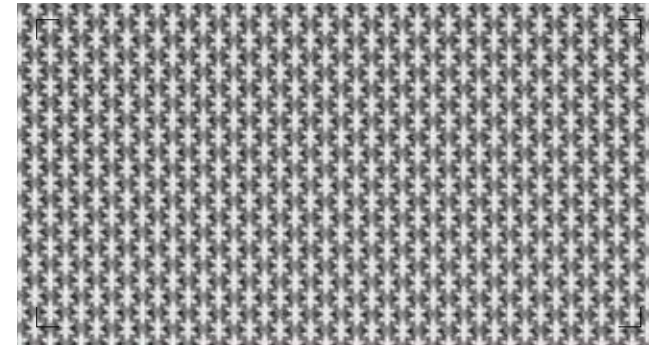
495 18 SLATE GREY



495 06 MAJESTIC GREEN



495 28 SMOKY GREY



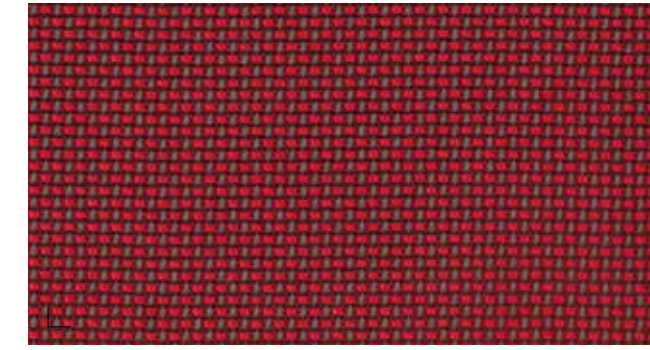
495 08 SILVER



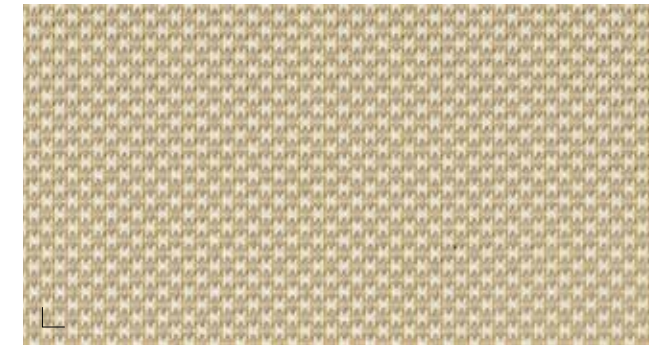
495 07 LIGHT PEBBLE



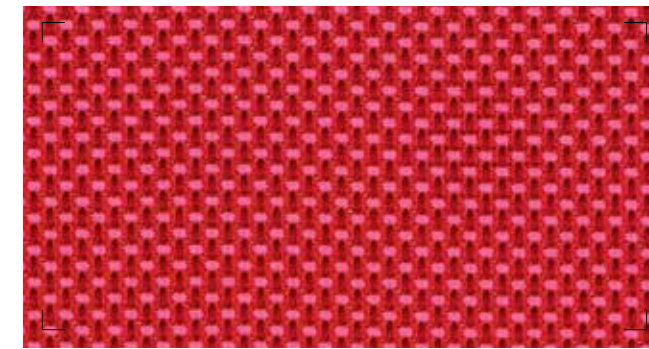
495 27 HAZELNUT



495 03 RUBY RED



495 17 CREAM



495 02 VIBRANT ROSE

**BLISS**



TECHNICAL DETAILS

Made in Germany

**BLISS**

		496 ..
Material composition	ISO 2076	100% Polyester
Fabric width	EN 1773	≈ 180 cm
Weight	EN 12127	≈ 350 g/m <sup>2</sup>
Piece length		≈ 40 m
Light fastness	ISO 105-B02	Note 7 [of 8]
Weather fastness	ISO 105-B04	Note 7 [of 8]
max. Tensile strength	EN ISO 13934-1	≈ 3200 N <sup>1</sup>   ≈ 3200 N <sup>2</sup>
Elongation	EN ISO 13934-1	≈ 35 % <sup>1</sup>   ≈ 40 % <sup>2</sup>
Colour fastness to rubbing	ISO 105/X12	Note 4 <sup>3</sup> [of 5]   Note 4 <sup>4</sup> [of 5]
Fastness to sea water	ISO 105-E02	Note 4 [of 5]
Chlorine resistance	ISO 105-E03	Note 4-5 [of 5]
Water repellency	EN ISO 4920	Note 4 [of 5]
Oil repellency	DIN En ISO 14419	Note 4 [of 8]
Abraision resistance	EN ISO 12947-2	≈ 50000 rubs
Pilling resistance	EN ISO 12945-2	≈ Note 5 [of 5]

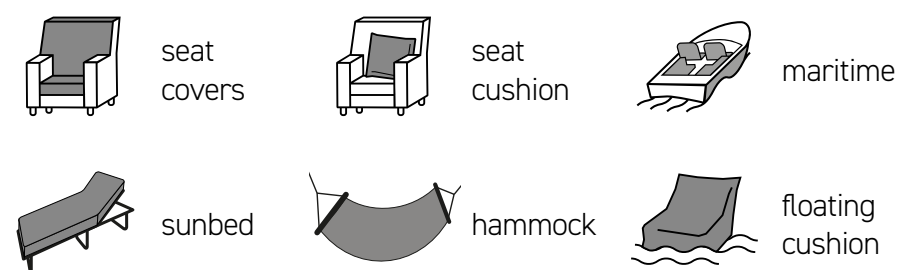
1 warp 2 weft 3 dry 4 wet

# BLISS

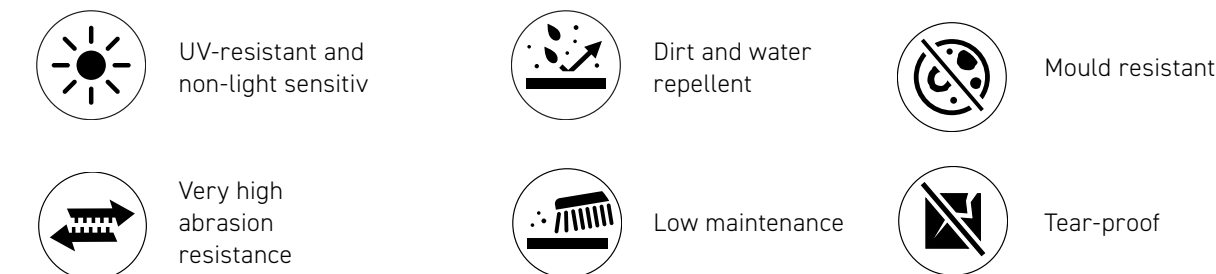
## BLISS

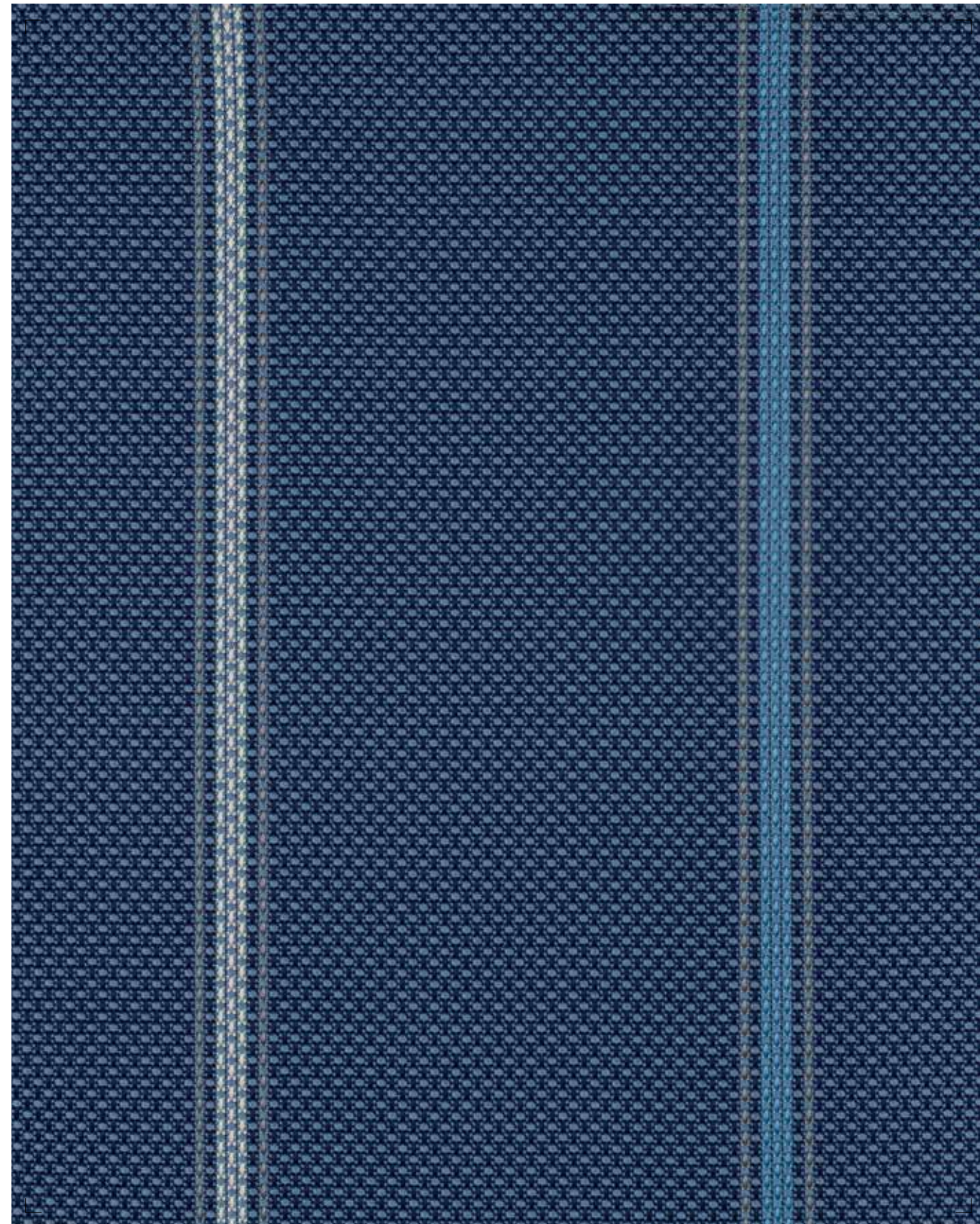
Bliss is a real eye-catcher with its finely coordinated, multicoloured stripes that invigorate the surface as a result of the contrasting effect. The elegant stripe with a width repeat of approx. 20 cm is ideal for all types of creative projects and is easy to mix and match with our finely patterned Twist plain fabric.

**EXAMPLE APPLICATIONS**

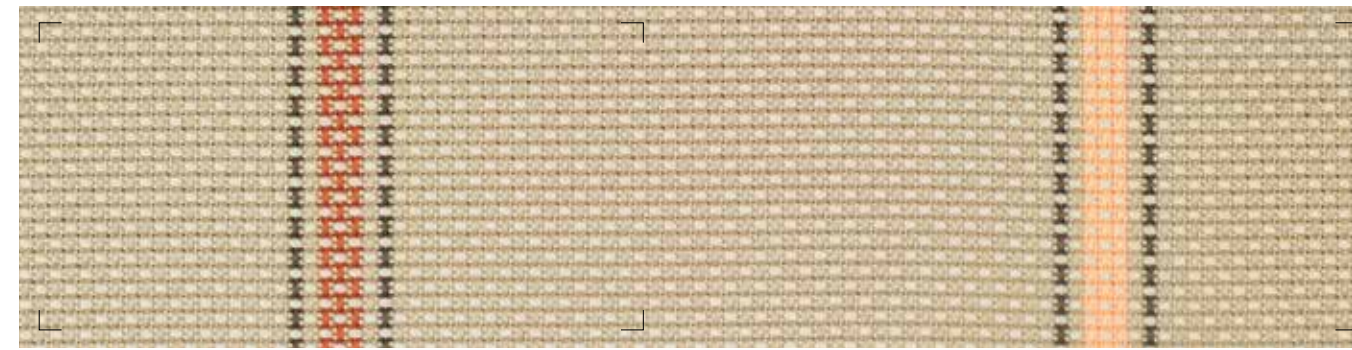


**USP**

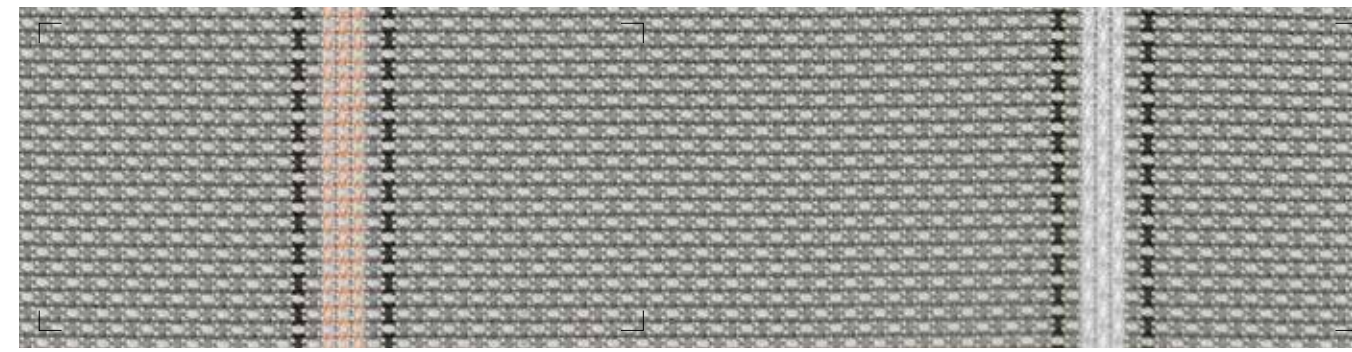




496 05 SAILOR BLUE



496 07 SANDSTONE



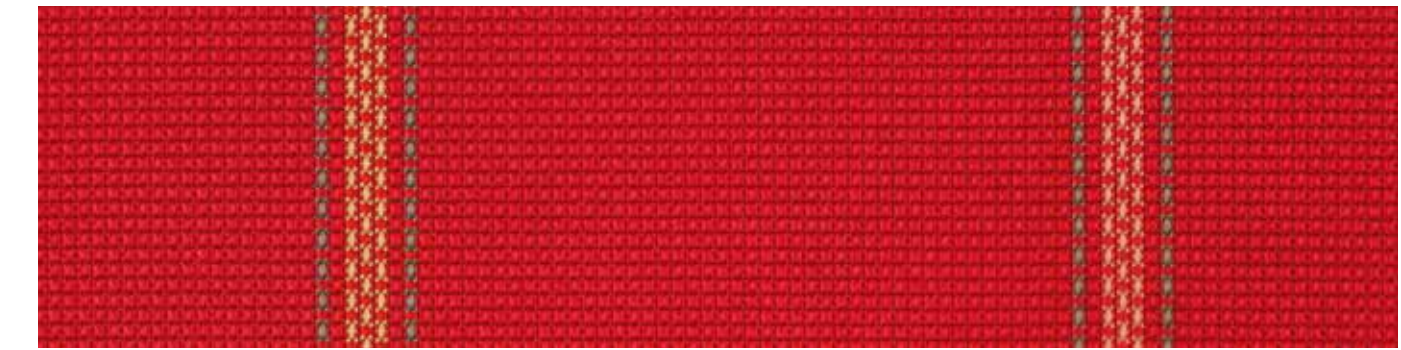
496 18 STEEL GREY



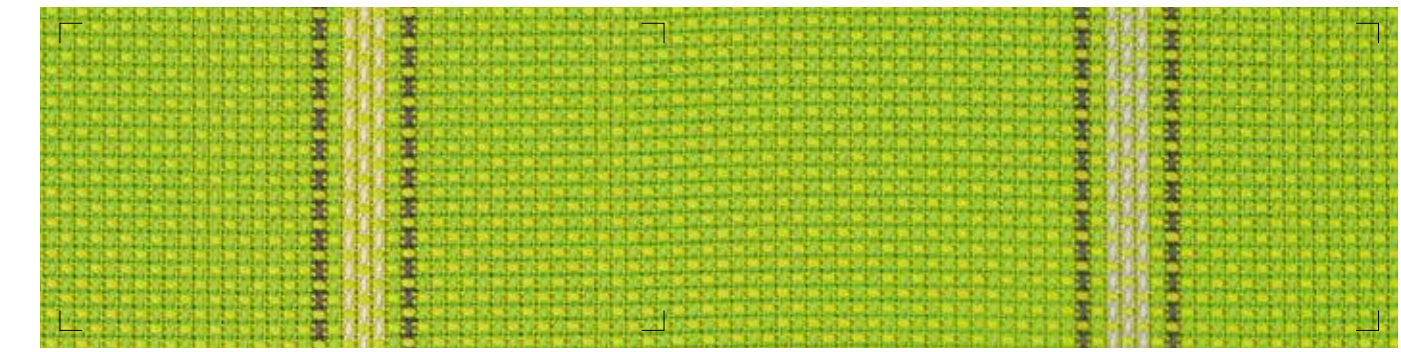
496 15 DARK DENIM



496 08 CHARCOAL



496 03 LAVA RED



496 06 VIVID GREEN



496 05 SAILOR BLUE



## GRID

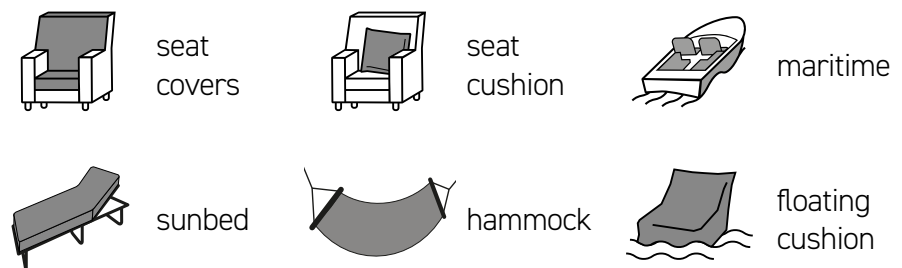


# GRID

## GRID

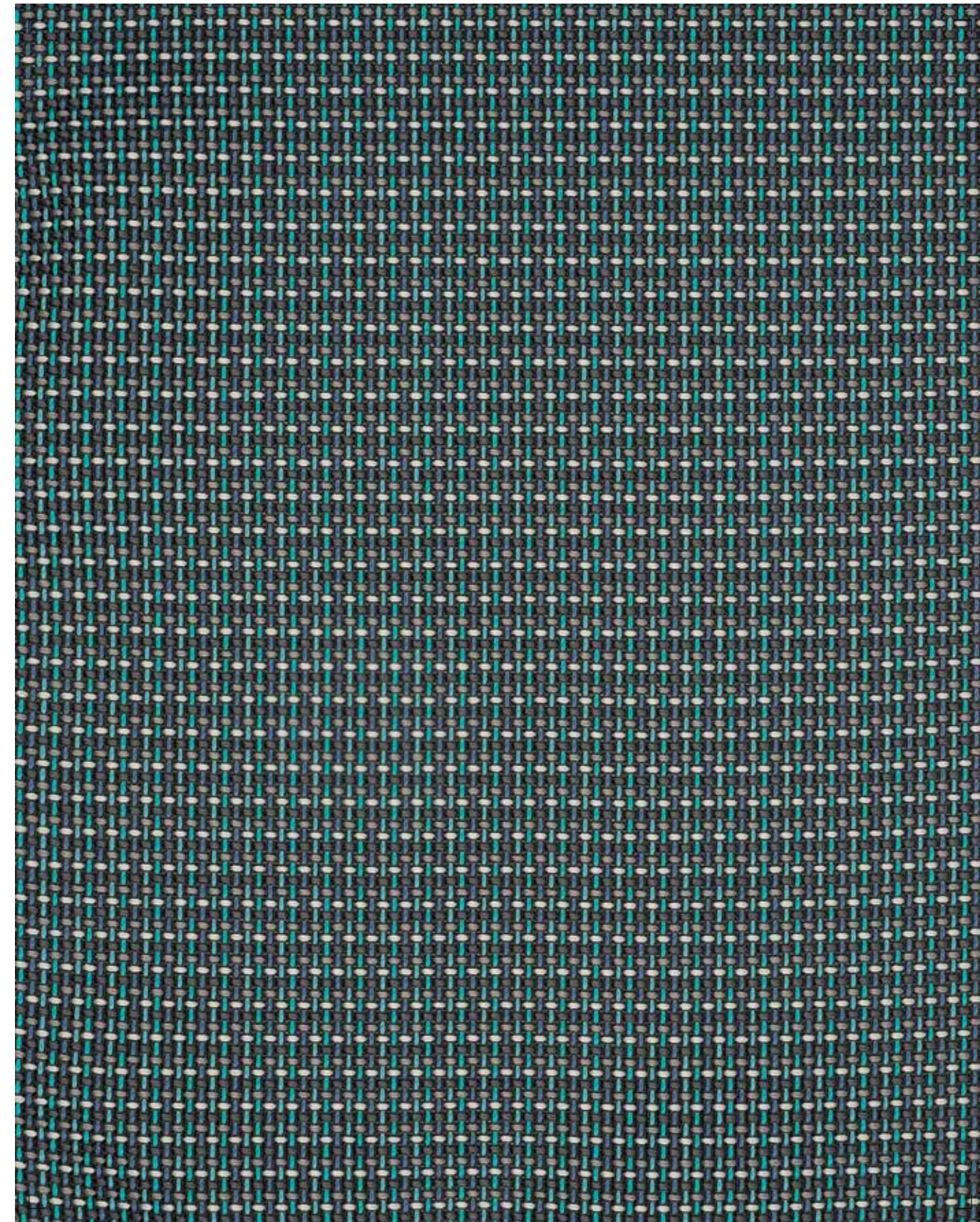
The Grid design is defined by its colourfulness. The coloured threads are woven together in a confident style. This creates a unique interwoven colour pattern in the warp and weft with a mini-check effect.

### EXAMPLE APPLICATIONS



REACH-konform

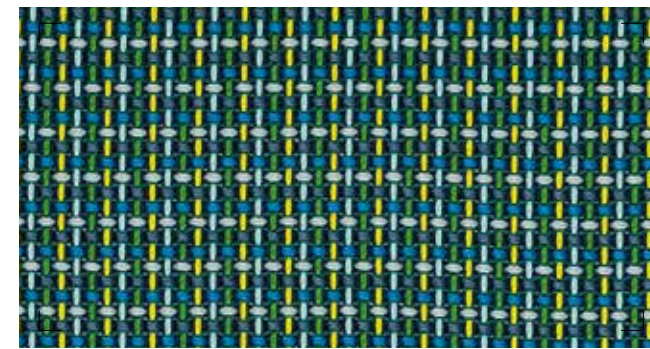




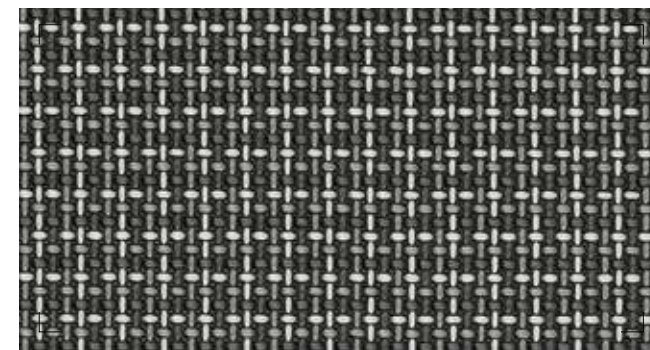
497 05 AQUAMARINE



497 15 MARINE BLUE



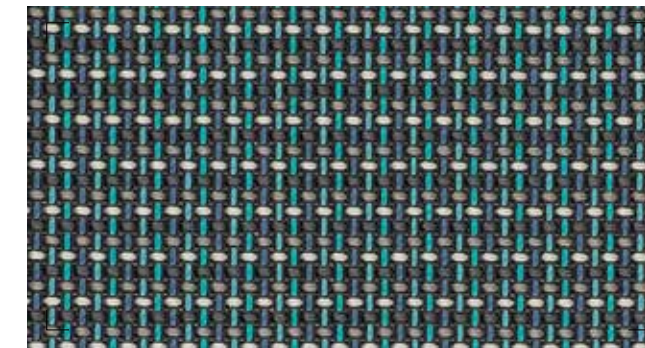
497 16 SEA GREEN



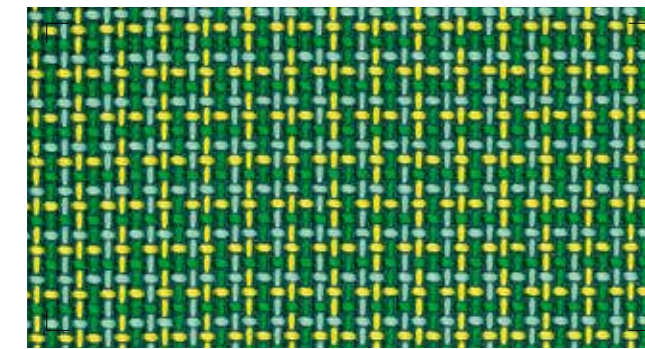
497 08 TITANIUM GREY



497 03 VERMILION



497 05 AQUAMARINE



497 06 JUNGLE GREEN



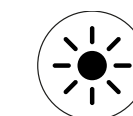
497 07 COCOA BROWN

GRID

		497 ..
Material composition	ISO 2076	100 % Polyester
Fabric width	EN 1773	≈ 180 cm
Weight	EN 12127	≈ 350 g/m <sup>2</sup>
Piece length		≈ 40 m
Light fastness	ISO 105-B02	Note 7 <sup>[of 8]</sup>
Weather fastness	ISO 105-B04	Note 7 <sup>[of 8]</sup>
max. Tensile strength	EN ISO 13934-1	≈ 3000 N <sup>1</sup>   ≈ 2800 N <sup>2</sup>
Elongation	EN ISO 13934-1	≈ 35 % <sup>1</sup>   ≈ 40 % <sup>2</sup>
Colour fastness to rubbing	ISO 105/X12	Note 4 <sup>3</sup> <sup>[of 5]</sup>   Note 4 <sup>4</sup> <sup>[of 5]</sup>
Fastness to sea water	ISO 105-E02	Note 4 <sup>[of 5]</sup>
Chlorine resistance	ISO 105-E03	Note 4-5 <sup>[of 5]</sup>
Water repellency	EN ISO 4920	Note 4 <sup>[of 5]</sup>
Oil repellency	DIN En ISO 14419	Note 4 <sup>[of 8]</sup>
Abrasion resistance	EN ISO 12947-2	≈ 100000 rubs
Pilling resistance	EN ISO 12945-2	≈ Note 5 <sup>[of 5]</sup>

1 warp 2 weft 3 dry 4 wet

USP



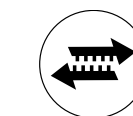
UV-resistant and non-light sensitiv



Dirt and water repellent



Mould resistant



High abrasion resistance



Low maintenance



Tear-proof